



PRESIDENTE
INTERCONTINENTAL®
MEXICO CITY

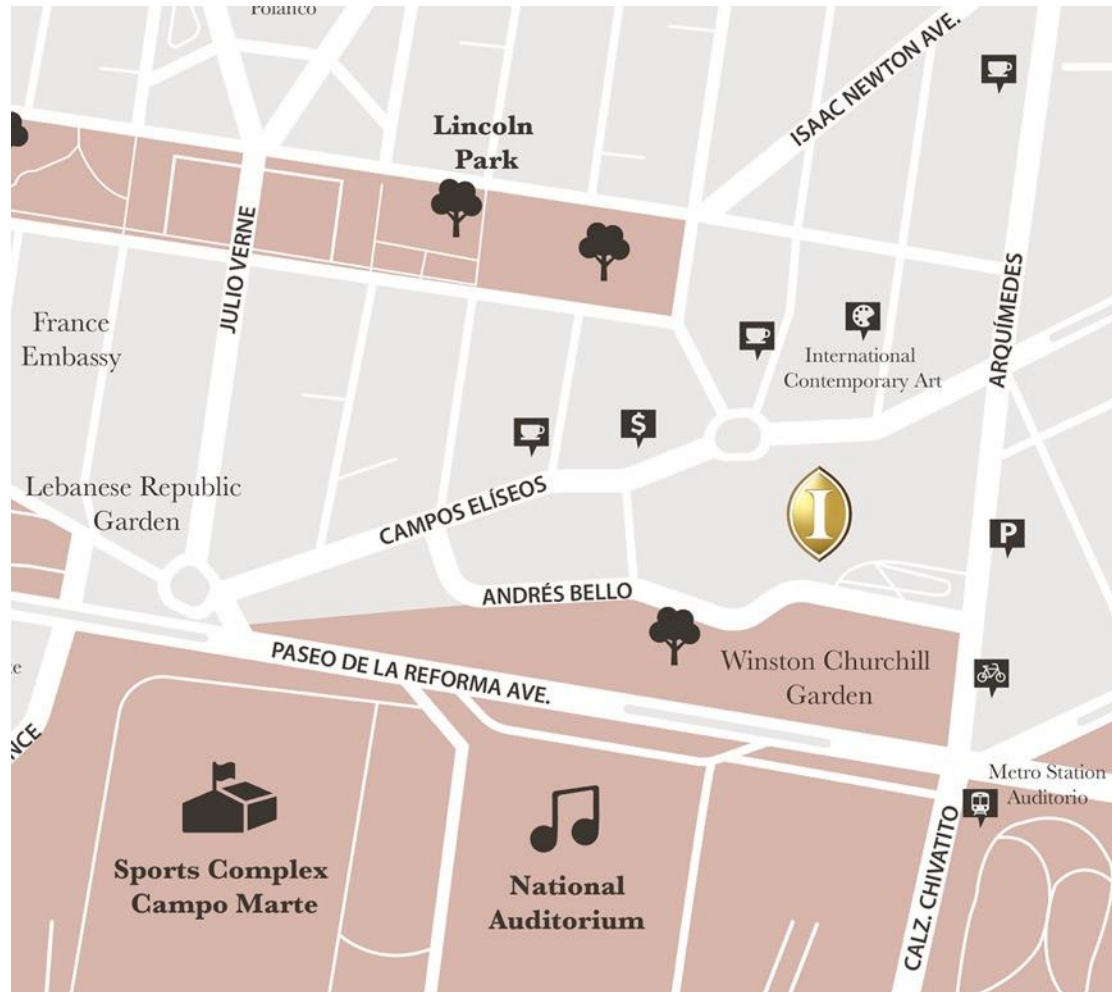


WELCOME



The Presidente InterContinental® Mexico City hotel is a reflection of one of the world's largest cities, with its unique blend of historical culture and authentic Mexican style. This hotel stands out as one of the capital's icons with its claim to fame as the first international hotel that opened its doors in Mexico City.

LOCATION



Situated in the heart of Polanco, a capital city's area known for being the home of international business corporations, diplomatic headquarters, fabulous dining venues, museums and exclusive high-end shops located on Masaryk Avenue, as well as Chapultepec Park and the art district.

COUNTS WITH 700 GUESTROOMS

Single 376 | Double 324



Category	Rooms
Presidential Suite	3
Master Suites	4
Suites	14
Club	191
Double Standard	278
Handicapped	7
Standard King	179
Ladies Room	24



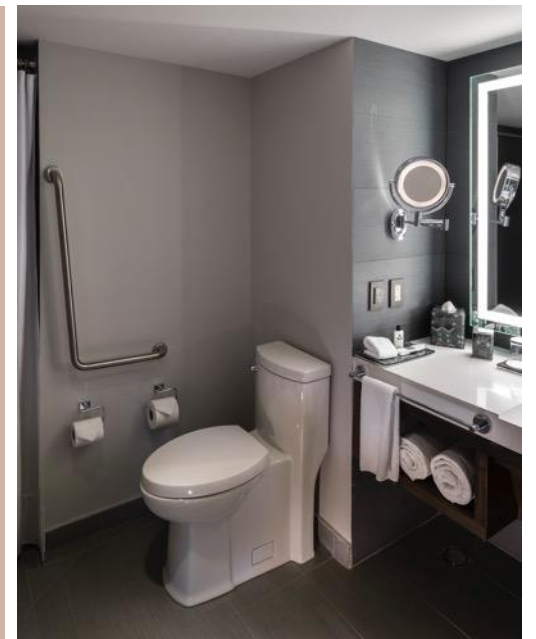
GUEST ROOMS



HANDICAP



Maximum capacity: 2
2 queen size beds
31.84 m²



POLANCO CITY VIEW ROOM



Maximum capacity: 2
1 king bed or
2 individual beds
31.84 m²

CHAPULTEPEC PARK VIEW ROOM

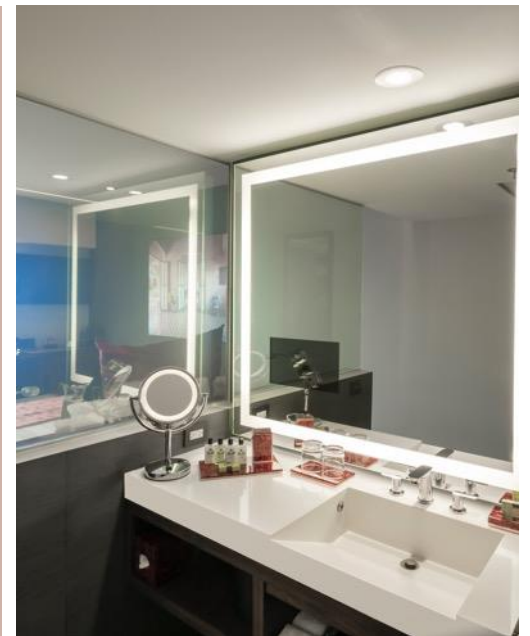


Maximum capacity: 2
1 king bed or 2 individual beds
31.84 m²

CLUB VIEW POLANCO CITY



Maximum capacity: 2
1 king bed
31.84 m²
Club Lounge Access



CHAPULTEPEC PARK ROOM



Maximum capacity: 2
1 king bed
31.84 m²
Club Lounge Access

SUITE



Maximum capacity: 2
1 king bed
Club Lounge Access
63.68 m²

LADIES ROOM

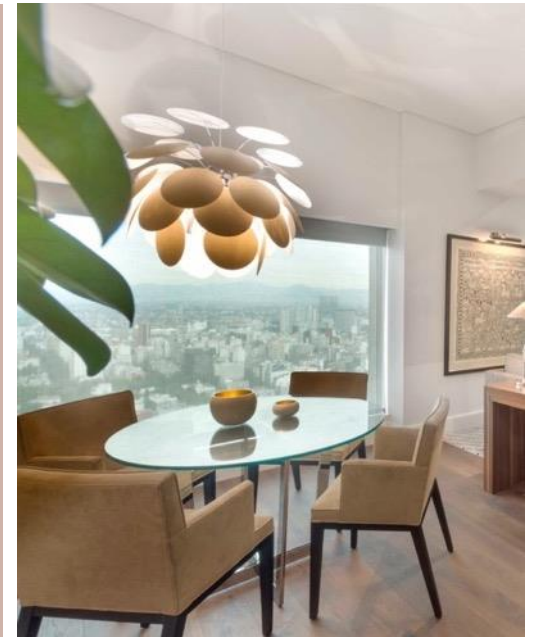


Maximum capacity: 2
1 king bed
31.84 m²

MASTER SUITE



Maximum capacity: 2
1 extra large double bed
101 m²



SUITE OROZCO

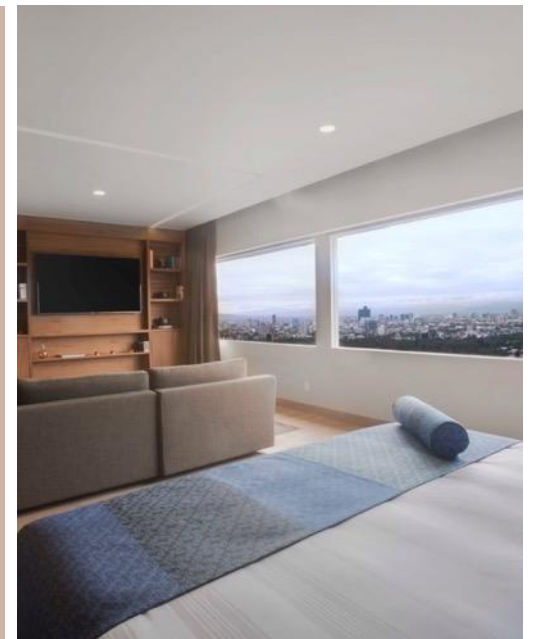


Maximum capacity: 2
1 extra large double bed
Club Lounge Access
128 m²

SUITE SIQUEIROS



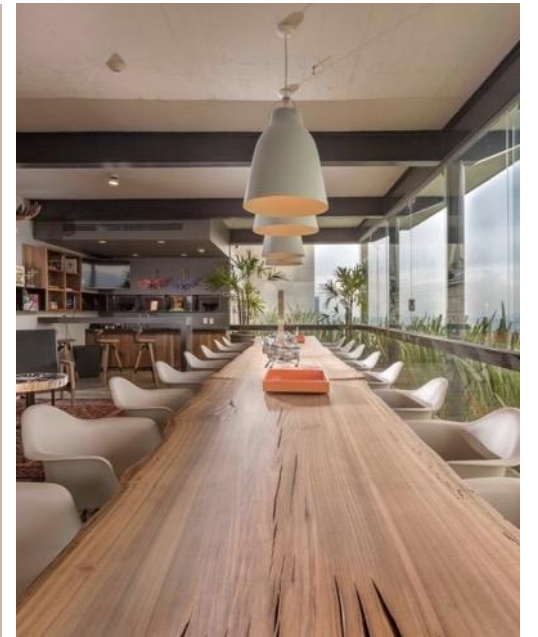
Maximum capacity: 2
1 extra large double bed
Club Lounge Access
238 m²



SUITE DIEGO RIVERA



Maximum capacity: 2
1 extra large double bed
530 m² in two floors



SUITE DIEGO RIVERA



RESTAURANTS



SPECIALITY RESTAURANTS

Au Pied de Cochon®

A French corner in the heart of Mexico City. Taste the best of French cuisine in the first Parisian bistro in the capital. Open 24 hours a day, 365 days a year, with private rooms, terrace and smoking area.



SPECIALITY RESTAURANTS



Alfredo Di Roma

Delight your palate with the exquisite taste of Italian cuisine. Our Alfredo Di Roma® restaurant is famous for its traditional Fettuccine all'Alfredo.

It has private rooms and a new terrace.



SPECIALITY RESTAURANTS



Chapulín®

Chapulín® is always willing to surprise and share what Mexico has to give. Delight with the taste of our Mexican restaurant, in which we pay tribute to the diversity and cultural richness by bringing our touch of home. Our motto is that, like Mexico, we will always make the best of the moments and places we inhabit.

SPECIALITY RESTAURANTS

The Palm®

Our classic American Steak House serves the best American cuts and the most delicious jumbo lobster of New Scotia, with extraordinary flavors in a unique atmosphere.



HOME RESTAURANTS



Café Urbano®

A modern space that seeks to provide a new urban-style experience. In the morning, we offer a buffet and à la carte service.

During the afternoon and evening, we have a large selection of dishes with fresh organic products that emphasize local flavors.

HOME RESTAURANTS

Balmoral®

Recognized worldwide for its English touch, Balmoral is a unique and different restaurant ideal for socializing.

We offer breakfast service and a light menu for meals in the afternoon.



BARS AND WINE CELLAR

Epicentro Gin & Tonic Bar

Taste the best of national and international cocktails in Epicentro, the ideal meeting point to enjoy the night after a day of intense activities. Our exclusive bar, which is specialized in Gin & Tonic, has unique creations, 66 different tequilas and a selection of the best whiskey, vodka, caviar and champagne. All in a casual atmosphere that will allow you to enjoy de nightly live music.



BARS AND WINE CELLAR

Wine Cellar

With more than 1500 wine brands from all over the world, our wine cellar is the largest one in Latin America.



INTERCONTINENTAL CLUB



CLUB LOUNGE



- The Club is located on the 39th floor, offering amazing park and city views.
- It has a private access lounge and concierge services, plus complimentary amenities that include internet stations, continental breakfast, afternoon drinks and hors d'oeuvres.
- Our facilities satisfy our guests' exquisite taste, as they can expect to find the same one-of-a-kind concept of “a hotel inside a hotel” at each InterContinental hotel they visit.

BUSINESS CENTER



GENERAL AREAS



GYM



SPA



GROUPS AND CONVENTIONS



BALLROOMS



- The hotel features over 19,000 square feet of meeting spaces distributed throughout 17 meeting rooms, that can seat anywhere from 10 people in a boardroom setting to 1,500 in an auditorium setting.
- While offering naturally lit event rooms overlooking the spectacular Chapultepec Park and the National Auditorium, we can customize our facilities to meet your specific needs.
- Our meeting rooms are equipped with Wi-Fi services, videoconference connections and the latest audiovisual equipment.

CASTILLO BALLROOM



PALENQUE BALLROOM



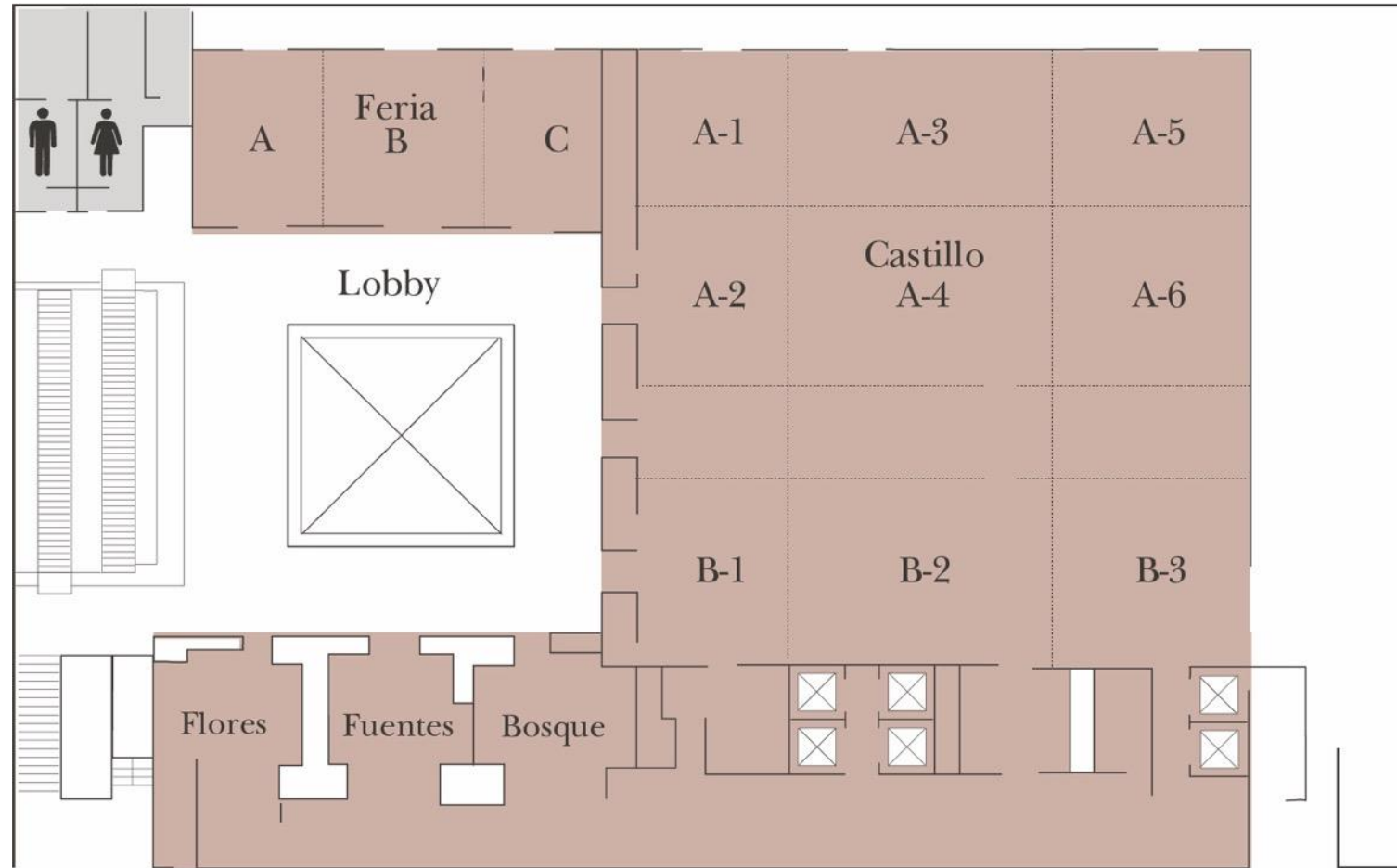
PALENQUE BALLROOM



PALENQUE BALLROOM

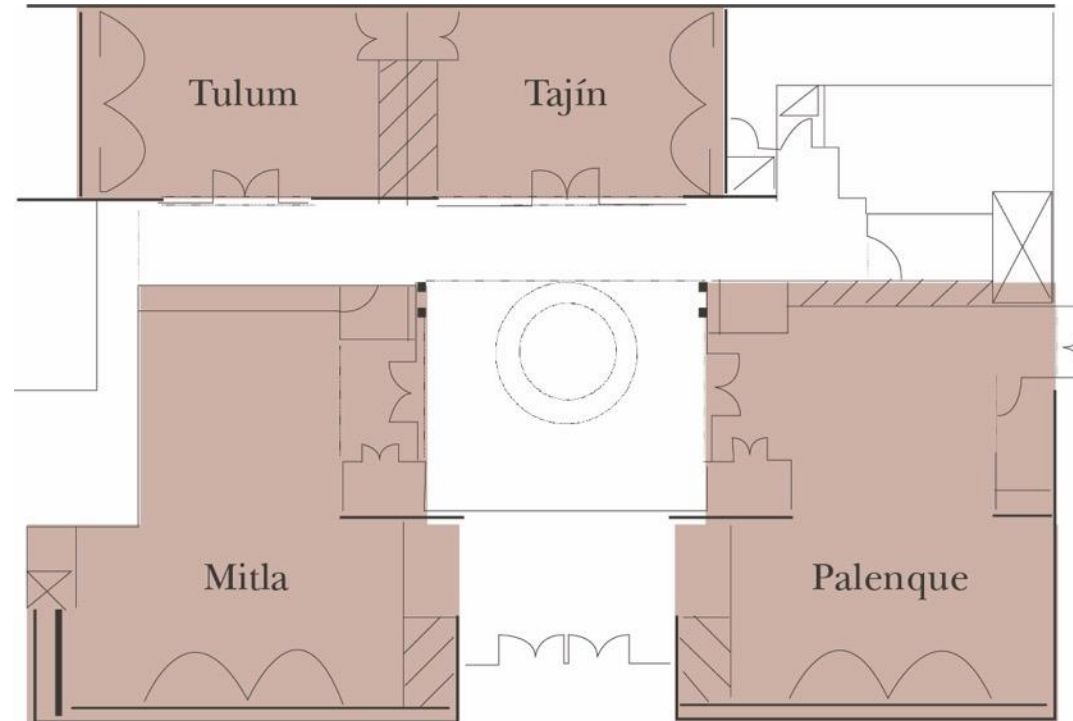


BALLROOM DIVISIONS



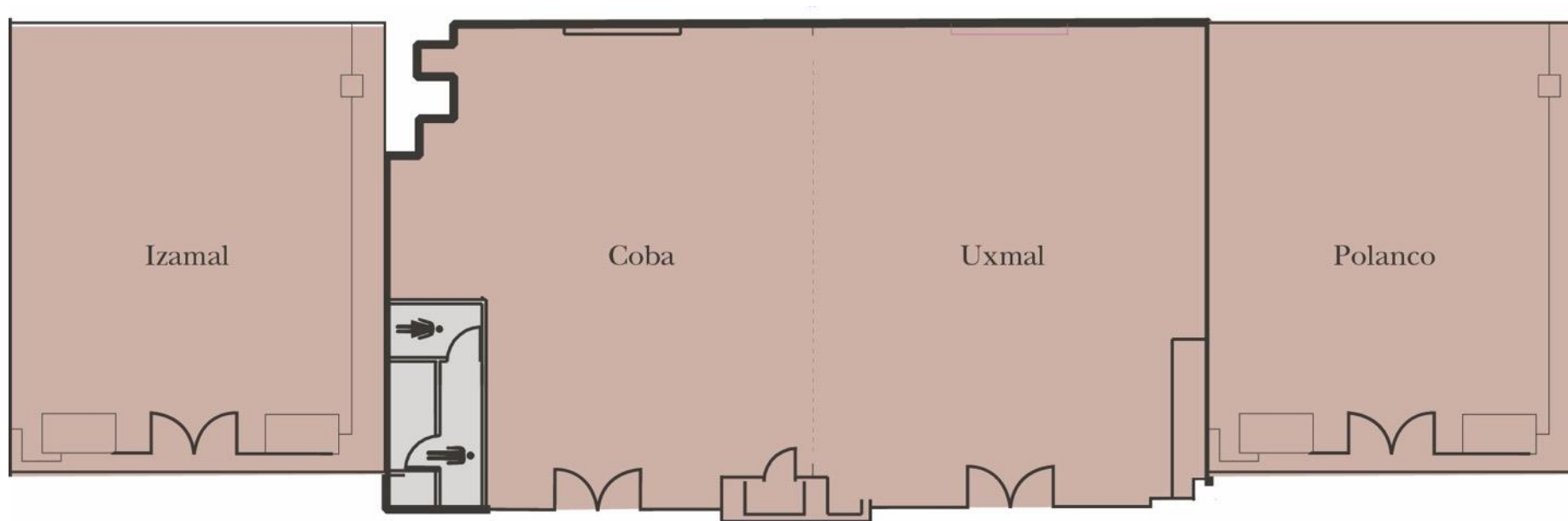
4TH FLOOR – CASTILLO LEVEL

BALLROOMS



3RD FLOOR – AZTLÁN LEVEL

BALLROOMS



MEZZANIE I

BALLROOM CAPACITIES

Ballroom	Theatre	Classroom	Cocktail	Banquet	Hollow Square	Boardroom	U-shape	Area (Ft)	Dimensions	High (Ft)	Floor
Castillo	1,200	800	1,100	800	180	180	135	11,515	109 x 105	15	4
Castillo A	600	400	500	450	120	120	115	6,503	61 x 105	15	4
Castillo A 1-2	200	100	150	150	60	60	60	1,973	61 x 31	15	4
Castillo A 3-4	240	140	200	200	70	70	70	2,646	61 x 42	15	4
Castillo A 5-6	200	100	150	150	60	60	60	1,878	61 x 30	15	4
Castillo B	240	200	200	200	110	110	105	3,425	32 x 105	15	4
Castillo B1	80	50	60	60	32	32	30	1,020	32 x 31	15	4
Castillo B2	100	70	90	90	40	40	40	1,337	42 x 31	15	4
Castillo B3	80	50	60	60	32	32	30	989	32 x 30	15	4
Feria	180	140	100	100	60	60	60	1,938	67 x 28	8	4
Feria I	50	30	40	40	20	20	20	571	28 x 20	6	4
Feria II	70	50	50	50	25	25	25	785	28 x 27	8	4
Feria III	50	30	40	40	20	20	20	571	28 x 20	8	4

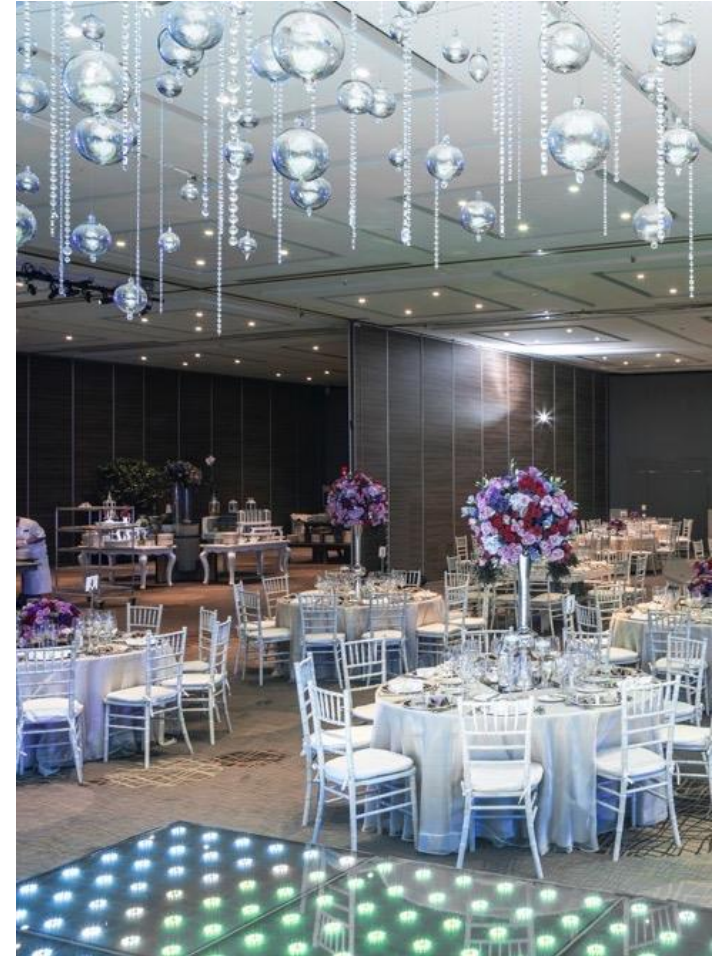
BALLROOM CAPACITIES

Ballroom	Theatre	Classroom	Cocktail	Banquet	Hollow Square	Boardroom	U-shape	Area (Ft)	Dimensions	High (Ft)	Floor
Bosque	50	30	40	30	30	20	20	383	26 x 14	8	4
Fuente	50	30	40	30	30	20	20	265	17 x 15	8	4
Flores	50	30	40	30	30	20	20	416	26 x 15	8	4
Palenque	60	30	50	40	40	25	25	537	30 x 17	8	3
Mitla	60	30	50	40	40	25	25	537	30 x 17	8	3
Tajín	30	20	20	20	20	20	N/A	339	24 x 13	8	3
Tulum	30	20	20	20	20	20	N/A	327	24 x 13	8	3
Coba y Uxmal	100	90	120	90	90	N/A	50	1,729	33 x 48	8	1
Coba	60	40	40	40	40	N/A	28	327	33 x 21	8	1
Uxmal	70	50	50	40	40	N/A	30	339	33 x 28	8	1
Izamal	70	50	50	40	40	N/A	30	542	31 x 20	9	1
Polanco	80	50	60	50	50	N/A	32	537	35 x 24	8	1
Bosque	50	30	40	30	30	20	20	383	26 x 14	8	4

WEDDINGS



WEDDINGS



WEDDINGS



DESTINATION



DESTINATION



Xochimilco



Teotihuacán

CONTACT

Presidente InterContinental® Mexico City

Campos Elíseos No. 218, Col. Polanco, 11560
Ciudad de México

Ph. 55 53 27 7700
Fax. (52) 53 27 7730
1 800 344 0548

mexicocity@grupopresidente.com
presidenteicmexico.com
intercontinental.com/mexicocity



Thank you

